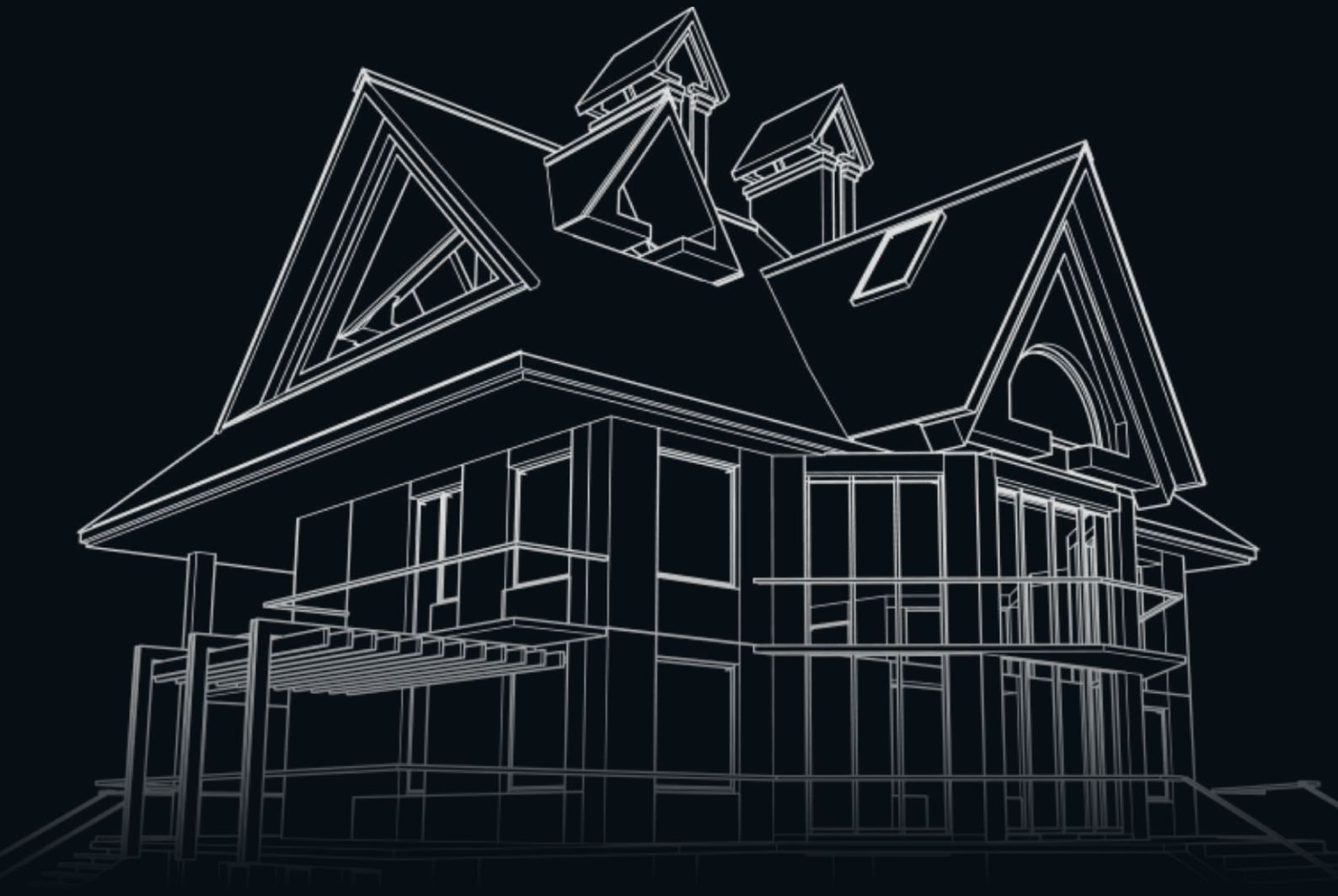




NEW GIRI PAINTS



ITS TIME TO **BEAUTIFY** YOUR DREAM....



NEW GIRI PAINTS

New Giri Paints is a home for innovations. We believe in developing innovative systems for regular painting solutions. Our approach to derive out of the box solutions makes us stand out from conventional market. We use standard sets of raw materials for our product range to match with international standards and quality. Our products are tested for extreme conditions before being delivered to our esteemed customers. We work hard to continuously upgrade our products to satisfy all aspects; be it quality, market trend or tailored customer requirement. We are committed to *making your valuables beautiful*.

About the Founder



Our founder, Nillesht Lahoti, is a pioneer in Chemical Engineering, having completed his Masters in Chemical Engineering from Lamar University in USA. After 5 years abroad, soaking in knowledge and experiences, he returned home with a burning passion for innovation. Now, he leads New Giri Paints, bringing fresh ideas to life. His dedication to creativity shines through the patent that he has applied for paint product and innovative products range, showcasing his commitment to excellence and shaping the future of our industry.

PRODUCTS



P3 DYNAMO (Primer + Putty + Paint)

****Patent Pending****

This is a dynamic product that by itself works as a primer, putty and final coat of paint. If you are working on a project this is ONE product you want. It saves material required, saves labour, saves time and ultimately saves \$money\$. This also gives dust free painting.

Available packing size: 1Kg, 2Kg, 5Kg, 10Kg and 20Kg.

Coverage: Upto 25 sq. ft per kg. (Includes one coat of primer, 2 coats of putty and one coat of final coat)



MAX STRETCH Elastomeric Coating

As name suggests this is an elastomeric paint coating that is up to 400% stretchable. It has glossy smooth finish. It has excellent dirt pick up resistance. This coating can be used on both horizontal and vertical surfaces. MAX has excellent water repellency hence providing waterproofing.

Available packing size: 1Ltr, 4Ltr, 10Ltr and 20Ltr.

Coverage: Upto 45 sq. ft. per lt for 2 coats



LOCKSEAL Water Repellent Coating

LOCKSEAL is a water repellent coating used for water proofing assistance. It has premium added additives to improve water repellency giving lotus effect on its surface. It has added anti fungal and anti algae additives. Lockseal can be used as base coat of paint to promote surface binding and water proofing for your walls and terraces. It can also be used as top coat paint.

Available packing size : 1Ltr., 4 Ltr., 10 Ltr. and 20 Ltr.

Coverage: Upto 60 sq. ft. Per lt.



BLEND Exterior Emulsion

Blend is a smooth finish exterior emulsion. It has additional additives to withstand climatic changes. This product has added anti-fungal additives suitable for dry to moderate humid conditions

Available packing size: 1Ltr, 4Ltr, 10Ltr and 20Ltr.

Coverage: Upto 40 sq. ft. per ltr. for 2 coats

NEW GIRI PAINTS

PRODUCTS



SHINE Interior / Exterior Emulsion

SHINE is a premium quality emulsion good for interior and exterior use. For exteriors it gives excellent weatherproof and water proofing quality. The sheen of emulsion makes walls look richer. For interiors it gives a premium look, decorating the walls to look beautiful. Wash proof quality of Shine emulsion allows regular cleaning.

Available packing size: 1ltr, 4ltr, 10ltr, 20ltr.

Coverage: For Interior: Upto 80 sq. ft. for 2 coats
For Exterior: Upto 50 sq. ft. for 2 coats



GLLORY Interior Emulsion

Gllory is a smooth finish emulsion. This adds aesthetic look to interior walls. This is an excellent and a smart choice over distempers.

Available packing size: 1Ltr, 4Ltr, 10Ltr and 20Ltr.

Coverage: Upto 75 sq. ft. per ltr



FIRST COAT Primer

This is a premium acrylic primer that has excellent hiding to prepare the wall surface to be freshly painted and give best results. This is a fast curing primer. The primer has additional additives for anti fungal properties.

Available packing size: 1Ltr, 4Ltr, 10Ltr and 20Ltr.

Coverage: Upto 85 sq. ft. per ltr.



INT-EX Primer

Int-Ex stand for interior-exterior, is an universal primer that works both on interior and exterior surfaces. It has added chemicals to provide anti-fungal properties.

Available packing size: 1Ltr, 4Ltr, 10Ltr and 20Ltr.

Coverage: upto 80 sq. ft. per ltr.

PRODUCTS



STAR Primer

Star is an excellent primer base coat for distempers or emulsions that assists superior finish for top coat.

Available packing size: 1Ltr, 4Ltr, 10Ltr and 20Ltr.

Coverage: Upto 80 sq. ft. per ltr.



BRIGHT Primer

Star is a primer base coat for distempers or emulsions that assists superior finish for top coat.

Available packing size: 1Ltr, 4Ltr, 10Ltr and 20Ltr.

Coverage: Upto 80 sq. ft. per ltr.



WONDER Acrylic Distemper

Wonder is an acrylic distemper used for interior walls. It gives a smooth finish to the surface.

Available packing size: 5Kg, 10Kg and 20Kg.

Coverage: Upto 35 sq. ft. per kg.



BRIGHT Acrylic Distemper

Bright is an acrylic distemper available in pouch packing. This product is available in 13 different ready shades. This gives a soft finish to walls.

Available packing size: 1Kg

NEW GIRI PAINTS

PRODUCTS



RED OXIDE Water Based Metal Primer

Water based Red Oxide is an innovative product that is water thinnable primer used for metal surface. This gives excellent bonding to metal surfaces. It provides all properties that of a solvent based red oxide primer. This is a green product.

Available packing size: 500ml, 1Ltr, 4Ltr, 10Ltr and 20Ltr.

Coverage: Upto 80 sq. ft. per ltr.



BLACK OXIDE Water Based Metal Paint

Water based Black Oxide is a water thinnable black metal paint used for finishing coat. This gives perfect bonding to all metal surfaces. This gives semi gloss finish. This is a green product.

Available packing size: 500ml, 1Ltr, 4Ltr, 10Ltr and 20Ltr.

Coverage: Upto 80 sq. ft. per ltr.



PROTEXR Interior / Exterior Texture

Protexr acrylic texture is a premium quality texture for various designs on interiors and exteriors. Protexr adds strength to the exterior of the walls, complementing to the aesthetics of the building. The material is user friendly for numerous custom designs.

Available Packaging Size : 30 Kgs.

Coverage : Upto 2.5 Sq. Ft. per Kg.



WALL PROTECT PUTTY

Wall Protect Putty is a white cement based white putty. Unique combination of white cement and polymers makes this putty water resistant, strong adhesion with building surfaces, extra coverage, silky smooth finish. This special formulation avoids moisture preventing flaking. This putty ensures fine finishing for the final painting needs.

Available Packaging Size : 30 Kgs.

Coverage : Upto 20 Sq. Ft. per Kg.

NEW GIRI PAINTS

P3

Primer + Putty + Paint



WATER BASED

PRODUCT BENEFITS

REDUCES 2-3 COATS OF APPLICATION DURING THE PAINTING JOB



OPTIMIZES
MATERIAL REQUIRED



SAVES LABOUR



SAVES MONEY



SAVES TIME



DUST FREE
PAINTING

PRODUCT FEATURES

Traditional painting process:



1 COAT
OF PRIMER



2 COATS
OF PUTTY



1 COAT
OF PRIMER



2-3 COATS
OF PAINT

Using P3



1 COAT
OF PRIMER

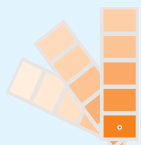


2 COATS
OF PUTTY



1 COAT
OF PAINT

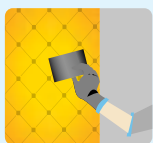
DIRECTION OF USE



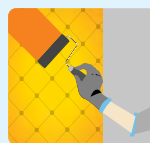
Add colourants of required shade in P3



Priming: P3 is used as primer. Add 750 ml of water to 1 kg of P3 to be used as primer. Allow 4-6 Hours of drying.



Putty - Surface leveling: Putty Paint used as putty. Add water as and if required. Apply 2 coats of putty to clear undulations of the wall. Allow 4-6 hours of time between consecutive coats. The puttied surface is smooth. Use emery paper if required.



Paint - Final Coat: P3 is used as a final top coat of paint. Add 500 ml of water to 1 kg of P3. Apply 1 coat of final paint with a roller or a brush. No additional coats of paint required.

MAX STRETCH

ELASTOMERIC COATING

USES

Water based elastomeric coating for concrete surface.
Can be used on horizontal and vertical surfaces

PRODUCT DESCRIPTION

As name suggests this is an elastomeric paint coating that is up to 400% stretchable. It has glossy smooth finish. It has excellent dirt pick up resistance to retain the initial beauty. This coating can be used on both horizontal and vertical surfaces. MAX Stretch has excellent water repellency hence providing waterproofing. This coating provides excellent anti-fungal property.



SURFACE FINISH - HIGH SHEEN

AVAILABLE PACKS - 1 Ltr, 4 Ltr, 20 Ltr, 200 Ltr.

THINNING

Add upto 100 ml water to 1 ltr of Max Stretch when using on horizontal surfaces.
Add upto 200 ml water to 1 ltr of Max Stretch when using on vertical surfaces.

Thinned paint to be used within 24 hours

COVERAGE

For horizontal surfaces - Around 35 sq.ft. per ltr. for 2 coats of coating
For exterior vertical surfaces - Around 50-60 sq.ft. per ltr. for 2 coats of coating

* Actual coverage may vary depending on application process, surface roughness

PHYSICAL PROPERTIES

Touch dry	:	30 min
Appearance	:	Viscous liquid
Viscosity	:	30 seconds (Ford Cup)
pH	:	8-10
Solids content	:	52%

LOCKSEAL

WATER REPELLANT COATING

USES

Water Repellant Coating for horizontal and vertical surfaces.

PRODUCT BENEFITS

Lockseal is a water repellant coating used for water proofing assistance. It has added premium additives to improve water repellancy giving lotus effect on its surface. It has added anti fungal and anti algae additives. It is used as a base coat for paints to promote water proofing for your walls



SURFACE FINISH - SMOOTH

AVAILABLE PACKS - 1 Ltr, 4 Ltr, 10 Ltr, 20 Ltr, 200 Ltr.

THINNING

Add upto 100 ml water to 1 ltr of Lockseal when using on horizontal surfaces.
Add upto 300 ml water to 1 ltr of Lockseal when using on vertical surfaces.

Thinned paint to be used within 24 hours.

COVERAGE

For horizontal surfaces - Around 50 sq.ft. per ltr.
For exterior vertical surfaces - Around 70 sq.ft. per ltr.

* Actual coverage may vary depending on application process, surface roughness.

PHYSICAL PROPERTIES

Touch dry	:	30 min
Appearance	:	Viscous liquid
Viscosity	:	27 seconds (Ford Cup)
pH	:	8-10
Solids content	:	55%

Allow 4 hours of time before applying 2nd coat of Lockseal or top coat.

WATER BASED **RED OXIDE**

USES

Water Based Red Oxide Metal Primer.

PRODUCT DESCRIPTION

Water based Red Oxide is an innovative product that is water thinnable primer used for metal surface.

This gives excellent bonding to metal surfaces. It provides all properties that of a solvent based red oxide primer. This is a green product.



SURFACE FINISH - SMOOTH

AVAILABLE PACKS - 500ml, 1 Ltr, 4 Ltr, 20 Ltr, 200 Ltr.

THINNING

Add upto 400 ml water to 1 ltr of red oxide.

Thinned primer to be used within 24 hours

COVERAGE

On smooth, flat metal surface by brushing - 140 – 160 sq. ft. / ltr *

* Actual coverage may vary depending on application process, surface roughness

DRYING TIME

Touch Dry	:	30 min
Recoat	:	2-4 hrs

RECOMMENDED USAGE

Water based Red Oxide is suitable for priming ferrous metal surfaces.

Appearance	:	Viscous liquid
pH	:	8-10

PATENT APPLICATION



ADVANCE E-MAIL

PCT

NOTIFICATION CONCERNING
AVAILABILITY OF THE PUBLICATION
OF THE INTERNATIONAL APPLICATION

PATENT COOPERATION TREATY

WO 2017/168321
PCT/IB2017/051767

From the INTERNATIONAL BUREAU

To:

LAHOTI, Nilesh
350 Nehru Path, Bhagur
Nashik 422502
INDE

Date of mailing (day/month/year)
05 October 2017 (05.10.2017)

Applicant's or agent's file reference
P3DYNAMO

IMPORTANT NOTICE

International application No.
PCT/IB2017/051767

International filing date (day/month/year)
28 March 2017 (28.03.2017)

Priority date (day/month/year)
29 March 2016 (29.03.2016)

Applicant
LAHOTI, Nilesh

The applicant is hereby **notified** that the International Bureau:

☒ has **published** the above-indicated international application on 05 October 2017 (05.10.2017)
under No. WO 2017/168321

☐ has **republished** the above-indicated international application on _____
under No. WO _____

For an explanation as to the reason for this republication of the international application, reference is made to INID codes (15), (48) or (88) (as the case may be) on the front page of the published international application.

- A copy of the international application is available for viewing and downloading on WIPO's website at the following address:
<https://patentscope.wipo.int/> (in the appropriate field of the structured search, enter the PCT or WO number).

- The applicant may also obtain a paper copy of the published international application from the International Bureau by sending an e-mail to patentscope@wipo.int or by submitting a written request to the contact details provided below.

Warning: Following publication of the international application, applicants, agents and inventors may receive misleading requests for payment of fees that appear to come from the International Bureau of WIPO or other patent Offices which are unrelated to the processing of international applications under the PCT.

Agents are particularly encouraged to be vigilant and alert their clients about this practice. Examples of such requests for payment which have been received by the International Bureau can be found at: http://www.wipo.int/pct/en/warning/pct_warning.html.

Please forward copies of any such requests to pct.legal@wipo.int.

The International Bureau of WIPO
34, chemin des Colombettes
1211 Geneva 20, Switzerland

Authorized officer

Cécile Chatel

Facsimile No. +41 22 338 82 70

e-mail: m.bh@wipo.int

Form PCT/IB/311 (July 2017)

NEW GIRI PAINTS



(Affiliated to Savitribai Phule
Pune University, Pune
ID No. PU/NS/Engg/030(1984)
and Approved by AICTE)

Karmaveer Kakasaheb Wagh Education Society's
**KARMAVEER KAKASAHEB WAGH INSTITUTE OF
ENGINEERING EDUCATION & RESEARCH**
Hirabai Haridas Vidynagari, Amrutdham, Panchavati, Nashik-3.
(Maharashtra) India.
Ph.:0253- 2512876 & 2515264 (Civil Dept) Fax: 0253-2511962.

Adjudged as Grade 'A' College by Govt. of Maharashtra. NBA- AICTE, New Delhi has accredited Six Branches

DEPARTMENT OF CIVIL ENGINEERING
TESTING AND CONSULTANCY DIVISION
MATERIAL TESTING LABORATORY
TEST REPORT

Ref: KKWIEE&R/CIVIL/T&C/MT/263 /2018

28/03/2018

To
Giri Paints,
Gat No. 132, Ghoti Sinnar Highway,
Pandhurla,
Tal. Sinner,
Dist. Nashik 422502.

**Subject: Testing of paint P3 Dynamo (Primer + Putty + Paint) supplied by M/S. Giri Paints, Nashik
in sealed condition.**

Name of Contractor: M/S. Giri Paints, Nashik.

Ref. No.: Your Letter Dated 03/02/2018.

Receipt No.: 1416, **Date:** 03/02/2018

Dear Sir,

Please find herewith the test results of the materials for 14 days.

1. P3 Dynamo (Primer + Putty + Paint)


- a) Initial Setting Time = 215 min. > 30 min. O.K.
- b) Final Setting Time = 585 min. < 600 min. O.K.
- c) Compressive Strength: @ 14 days = 6.0 N/mm²

References:

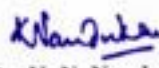
- 1) I.S. 269-1976, Specification for Ordinary Portland cement and Low Heat Cement.
- 2) I.S. 650-1966, Specification for standard sand for testing of cement.
- 3) I.S. 4031(Part 4)-1988, Methods of physical test for hydraulic cement.
- 4) I.S. 4031 (Part 5)-1988, Methods of physical tests for Hydraulic Cement.
- 5) I.S. 4031-6 (1988): Methods of physical tests for hydraulic cement.

Note: This report, in full or in part, shall not be published, advertised, used for any purpose other than for which permission has been secured from Principal. This report is valid only for the sample tested.


Dr. P. D. Dhake
Lab. Incharge


Dr. Pradip D. Jadhao
Prof. & Head




Dr. K. N. Nandurkar
Principal

TEST REPORT

Durocrete Engineering Services Pvt. Ltd.
19/1, Hingane Khurd, Vitthalwadi, Sinhgad Road, Pune - 411 051
Tel: +91-98817 33302, 020-24345170, 24348027
Email: info@durocrete.com
An ISO / IEC 17025: 2005 NABL Accredited Laboratory

DUROCRETE
Test with the Best

Website: www.durocrete.com

Test Report Emulsion Paint

Customer name : GIRI Paints

Date of Issue : 19-Oct-15

Office address : 350, Nehru Path, Bhagur, Dist - Nashik - 422 502

Report No. : OT-3982/1-1

Site name : GIRI Paints, Sinnar

Sample Ref. No. : OT-27843

Description : Exterior Paint (Equivalent to Asian Paints Apex)

Bill No. : DT - 41976

Recd. Date : 01-Oct-205

Date of testing : 17-Oct-15

OBSERVATIONS & CALCULATIONS:

Sr. No.	Test Parameter	Result	Standard Result as per EAS 184:
1	Condition in can	Satisfactory	Free from lump, surface skin, color separation & hard settlement.
2	Application	Satisfactory	Smooth & uniform
3	Solid Content	51.29%	---
4	Pigment to binder ratio	1:1	----
5	Particle Size (Hegman Gauge)	< 20 micron	Does not exceed 25 micrometer
6	Recoating (After 4 hrs)	Satisfactory	No damage to first coat
7	Opacity (m ² /kg)	14.59	16.00
9	Finish	Good, smooth	----
10	Resistance to alkalinity (3% Sodium Hydroxide)	Satisfactory	No color difference when examine visually
11	Resistance to wet abrasion after 4000 oscillations.	Satisfactory	No damage to first coat, No removal of film.
12	Resistance to acid (3% Hydrochloric acid)	Satisfactory	---
13	Tape Adhesion Test	Satisfactory	----

Durocrete's Hologram authenticates the report

Reference: IS 101 & IS 15489.

Authorized Signatory


Dr. A. J. Singh
(Manager Quality)

Checked By : Neeta Nivangune

Regd. Office : 1160/5, Gharpure Colony, Shivaji Nagar, Pune 411005, Maharashtra, India. CIN : U28939PN1999PTC014212

(This Report is subject to terms & conditions mentioned overleaf)



NEW GIRI PAINTS

महाराष्ट्र गृहनिर्माण व क्षेत्रविकास प्राधिकरण
MAHARASHTRA HOUSING AND
AREA DEVELOPMENT AUTHORITY



म्हाडा
MHADA



APPROVAL LETTER

No : CE-I/EE-I/A/ ^{ET-122} /2023
Date : 3/3/2023

To,

M/S New Giri Paints.
Gat.No.132, Ghoti-Sinnar Highway,
Pandhurla, Tal.Sinnar,
MH.India-422502.

Sub:- Approval of product for use in MHADA works.

M/S New Giri Paints. Products Paints for wall finishes
under brand name "New Giri Paints"

Ref:- Your letter dated on 03.03.2023 and received on 03.03.2023

Sir,

This has reference to your above cited letters and subsequent correspondence on captioned subject matter. As requested, your proposal for approval of the following products

- 1) Paints (Interior and Exterior) All interior and exterior wall finishes
- 2) Primer (Interior & Exterior)
- 3) Emulsion (Interior & Exterior)
- 4) Exterior Texture

under brand name "New Giri Paints" for use in MHADA projects is hereby approved on the terms and conditions stated below:

Terms and Conditions :

- 1) The validity of the enlistment shall be only for **TWO YEARS** further from issue of this letter. However, the MHADA reserves the right to cancel the same.
- 2) The product shall be in conformity with requirements of specifications of Bureau of Indian Standards.
- 3) The approval has been granted on the basis of documents/information furnished by the vendor. The approval would be cancelled if any details are found in variance to the details already furnished during the inspection

गृहनिर्माण भवन, कलानगर, बंड्रे (पूर्व), मुंबई ४०० ०५१.
दूरध्वनी ६६४० ५०००
फैक्स नं: ०२२-२६५९२०५८

Griha Nirman Bhavan, Kalanagar, Bandra (East), Mumbai-400 051.
Phone : 66405000
Fax No. : 022-26592058 Website : www.mhada.maharashtra.gov.in



LITTLE BLOSSOMS SCHOOL, IGATPURI
DIST-NASHIK.

CMAA AFFILIATION NO: 1171328 E-AMMO: 1709011177

ADDRESS: SURVEY NO 126, KHALADGI ROAD, BORDA, MUMBAI SUBURBAN, NEAR
GANDHARIGIRI, IGATPURI DIST. NASHIK. 422002. Maharashtra
Website: www.littleblossomschool.com E-mail: littleblossomschool@gmail.com

Ref No. 189 / 59 /2022 Date: 23 / 12 / 2022

TO WHOM SO EVER IT MAY CONCERN

We are using paint products manufactured by New Giri Paints for our school Little Blossoms in Igatpuri. Monuments in Igatpuri are heavy and long, so we were very particular about the exterior paint quality to be used. We are very satisfied with paints from New Giri Paints that matched our expectations.

We strongly recommend New Giri Paints products.





TO WHOM SO EVER IT MAY CONCERN

We have used paint products manufactured by New Giri Paints, all their products are at par with quality.

We are completely satisfied with the quality.



SHRINATH CONSTRUCTION
Place : Nashik
Date : 30.09.2022

J. Sanyal, Qpt. Namdeva School, Sawant Nagar, Gangapur Road, Nashik 422 015
Ph. 22032-2244 202 | eMail - shrinathconstruction.com | Website - www.shrinathconstruction.com



Siddhivinayak Infra

Ref. : _____ Date : _____

Date: 11/03/23

TO WHOMSOEVER IT MAY CONCERN

We are using products manufactured by New Giri Paints for our various projects for past 8 years. We are completely satisfied with the quality and performance of the paint quality over the years. We highly recommend the products for all type of projects.



SIDDHIVINAYAK INFRA
PARTNER

Office Add: S.NO - 23/2021 B Plot No. - 5, Near By Ichhapuri Ganesh Mandir, Upregal, Nashik Road, Nashik - 422 008



Color Vision Services Pvt Ltd
Web: <http://www.colorvisionservices.in>
Email: colorvision.spl@gmail.com
Office No: 8422845815

To whomsoever it may concern

We are associated with New Giri Paints for our various projects for the past 2 years. We are satisfied with the quality and performance of the paint quality over the years.

We are using their product in the **Satya joshi harti ratan Project** (At. Harti Ratn CHS, Bangur Nagar, Gangapur West, Mumbai, Maharashtra 400194) for the past 2 years.

"Thanks and Regards"

Colorvision services Private Limited




Authorized Signatory




9 Plot No 20/21, Shop No 03, Savan Heritage, Sector 15, Navi Mumbai, Raigad, Maharashtra, 410 218.



NEW GIRI PAINTS

 **Factory Add :**
Gat No. 132, Ghoti Sinnar Highway,
Pandhurli, Tal. Sinnar, Dist. Nashik.

 9404513360

 newgiripaints@gmail.com